

上海春谷机械制造有限公司

公司地址: 中国上海市虹口区欧阳路501弄50号104室 邮编: 200081

厂址: 中国上海市奉贤区科工路1755号

联系电话: +86-21-65075320

+86-13801804320 俞先生

+86-13681917712 俞先生

+86-13501927048 乐女士

传真: +86-21-65075150

邮箱: Yuxinguk@126.com Yuzheng691@hotmail.com

网址: www.chun-gu.com

SHANGHAI SPRING VALLEY MECHANISM MANUFACTURE CO.,LTD

Address: Room 104, No.50, Lane 501, Ou Yang Road, Shanghai, China Postcode: 200081

Factory address: No.1755, Ke Gong Road, Shanghai China.

Tel: +86-21-65075320

+86-13801804320 Mr. Yu

+86-13681917712 Mr. Yu

+86-13501927048 Miss Le

Fax: +86-21-65075150

E-mail: Yuxinguk@126.com Yuzheng691@hotmail.com

Http://www.chun-gu.com



上海春谷机械制造有限公司

SHANGHAI SPRING VALLEY MECHANISM MANUFACTURE CO.,LTD

公司简介 COMPANY PROFILE

上海春谷实业有限公司成立于1997年、上海春谷机械制造有限公司成立于2007年。两个公司同是原上海相关领域科研人员创办的集研发、制造、贸易为一体的股份有限公司。总部设在中国上海市中心虹口区，下属生产基地在上海市奉贤区。春谷公司立志发展民族经济，建司来，坚持贯彻以人为本、用户至上、开拓创新、做精做强的经营方针，以科研为先导、技术为支撑，取得了一系列成果。主要机械产品锤片粉碎机、混合机、风机、输送设备等，大量应用于食品、饲料、化工等领域。产品已获得约20项中国发明专利、实用新型专利、美国发明专利等知识产权；获得了首批中国质检总局颁布的饲料粉碎机械生产许可证；获得了（1998年）上海市优秀发明选拔赛“三等奖”；2007年被上海市奉贤区科委认定为《上海市高新技术成果转化项目》；2006年至2010年内三次被当地政府评为“先进企业”；2010年被《中国粮油学会》评为科学技术奖“二等奖”、公司被评为“全国粮油科技创新型企业”；2012年被上海市科委认定为《高新技术企业》；2013年被《中国粮油学会》评为科学技术奖“一等奖”。在2013年被评为奉贤区发明专利技术产业化优秀企业。在2013至2015年期间产品被列为奉贤区、上海市、国家级创新基金资助项目；产品通过了《国家渔业机械仪器质量监督检验中心》的检测，各项技术指标都符合检测标准；经《中国科学院上海科技查新咨询中心》查新，综合技术达到国际先进水平；目前产品已在国内外上千家单位投入使用，其技术性能、创新含量、低碳环保、性价比等均处于行业领先水平。

上海春谷公司竭诚希望与海内外企业家携手合作共图发展。

Shanghai Spring Valley industrial Co., Ltd. was established in 1997 and Shanghai Spring Valley Mechanism Manufacture Co., Ltd. was established in 2007. Both of them were established by a group of R&D members in related industry, it is a joint-stock enterprise combing R&D, manufacturing, and trading. The headquarter lies in the CBD of Shanghai in China with one subsidiary manufacturing plant. Since establishment, Sping Valley had made great achievements by insisting on business ethics of "People oriented, customers first, continuous innovation, be specialized", insisting on the management principle of "R&D as guideline, technology as support". Spring Valley's products such as hammer mills, pulse filter, penumatic equipments and conveyors are widely used in food, feed, composites, and chemical industry. Main product hammermill is issued with production license from AQSIQ and has achieved many kinds of honors and prizes such as Shanghai Outstanding invention award (1998)、Shanghai high-tech achievement transformation project (2007)、Advanced technology award second prize from CCOA (CHINESE CEREALS AND OILS ASSOCIATION 2010)、Advaced technology award first prize from CCOA(2013)

Shanghai Spring Valley wish to cooperate with friends at domestic & oversea and put our efforts to seek mutual development.



部分荣誉及奖项 HONER & PRIZE

- 1998 上海优秀发明选拔赛三等奖
Shanghai Outstanding Invention 3rd Prize
- 2007 上海高新技术成果转化项目
Shanghai High-tech Achievement Transformation Project
- 2008 先进民营企业
Advanced Private Enterprise
- 2009 先进民营企业
Advanced Private Enterprise
- 2010 先进民营企业
Advanced Private Enterprise
- 2010 中国粮油学会科学技术奖二等奖
CCOA Science and Technology 2nd Prize
- 2010 中国粮油学会优秀科技创新企业
CCOA Outstanding Technology Innovative Enterprise
- 2012 上海市高新技术企业
Shanghai High-tech Enterprise
- 2013 国家创新基金资助项目
National Innovation Foundation Project
- 2013 中国粮油学会科学技术奖一等奖
CCOA Science and Technology 1st Prize



科技创新 R&D

春谷公司坚持以技术创新为先导，拥有20多项国内外专利技术，并能够迅速将科技创新转化为生产力，运用到产品中。公司每年坚持固定投入研发，高效务实的开发理念使得春谷公司的产品能够不断改进，持续发展。

Spring Valley adhere to technological innovation as the guide, has more than 20 domestic and foreign patents, technology innovation was quickly applied into products, Spring Valley adhere to a fixed annual investment in research and development, efficient development concept makes Spring Valley can continue improving products for a sustainable development.



※ 美国发明专利证书
U.S INVENTION PATENT



※ 多项中国专利证书
CHINA INVENTION PATENT

做新做强
做精做长

上海春谷机械制造有限公司车间实景

新产品 “至高” 锤片粉碎机

NEW ZJ Series SUPREME Hammermill



01

核心专利粉碎技术 Unique patented grinding technology

◆ 专利筛网振动技术

Patented screen vibrating technology

提高筛网瞬态开孔率。小筛孔、高油脂、高水份、高纤维物料堵塞现象消失，颗粒均匀度明显改善。

Improve transient screen hole opening rate. Fine, high-fat, high moisture, high-fiber material clogging disappear, uniformity significantly improved.

◆ 专利定锤结构技术

Patented "scissor cutting" technology

在粉碎室内增加定锤，改变了物料与锤片同向旋转粉碎效率低的状态，增加了剪切，摩擦的概率，增加粉碎效率40%以上。定锤在内部顶起筛网，使得锤筛间隙均匀，产量高，筛磨损均匀，尤其对筛孔1.0毫米以下的薄筛网，效果明显；定锤起到1/2的粉碎效果，单片锤片产量参数提高一倍，更换周期延长。

Add stationary hammer inside grinding chamber, changing the trajectory of the particle, increased friction and shear frequency, the grinding efficiency improved over 40%. Stationary hammer reduced wear on screen and hammers. life of wear parts extended.

◆ 专利气流振动技术

Patented pneumatic vibrating technology

在转子上增加风叶，通过转子旋转产生脉动风压，有利于粉碎室内的物料及时出筛，同时保持粉碎腔内处于低温状态。

Add blade on rotor to generate pulse pneumatic pressure inside grinding chamber, qualified particle will coming out of the grinding chamber in a timely manner, the grinding chamber maintaining a low temperature working status.

02

配置特点 Configuration features



标准配置SKF重载型轴承

Standard equipped with SKF heavy duty bearing unit

运行平稳、温升低。

Smooth running with low temperature rise.



标准配置高效的动力与传动

Standard equipped with high efficiency motor and coupling unit

动力强劲，过载能力强，联轴器采用轮胎式/蛇形弹簧式联轴器，补偿位移大，扭力输送平稳。

Powerful motor with excellent over-load capacity, tyre/steelflex coupling system provide smooth and high torque power transmission



筛网宽至1200mm

Can equipped with screen with width 1200mm

相比传统锤片式粉碎机筛网宽度加宽，出料速度快，产量更高。

Screen width doubled compare to traditional model of hammermill, increased discharge speed of the particle, production capacity is even better.



标准配置停机保护

Standard equipped power-off protection unit

确保操作人员安全避免事故。

Ensure operation safety and avoid accidents.

设计特点 Design features 03



全开放式维护门，两段式自紧压筛机构

All open maintenance gate, two-stage self tightening screen frame

更换锤片、筛网等易损件方便快捷。

Easy on hammer & screen change for maintenance.



内筛框架配有耐磨密封件

Wear resistant seal inside the inner screen frame

细度高达100目的细粉料也无漏料现象。

No leakage while grinding particle up to 100 mesh.



大幅度可调锤筛间隙结构

Adjustable "screen hammer gap" design

可“无级”调整锤筛间隙以适应不同粉碎原料、达到粉碎机最佳工作状态。

"Screen hammer gap" can be adjusted to achieve best performance for different raw material.



轻量化、高精度动平衡转子

Light weight, high-precision dynamic balancing rotor

降低空载启动电流节约能耗，设备运行稳定持久。

Load current and starting current is lower, means more energy saving. hammermill operation stable and lasting.

04

性能特点
Performance features



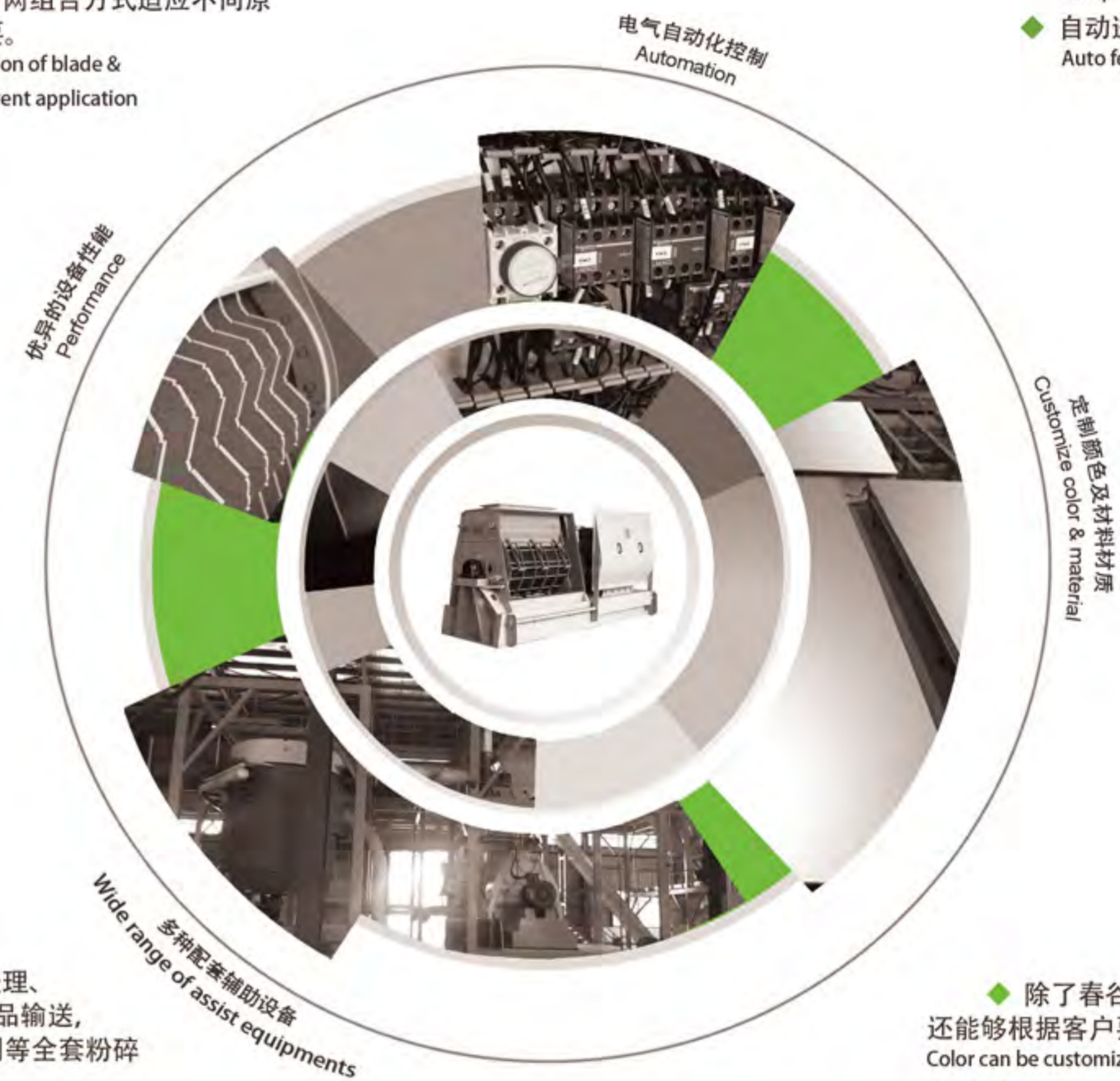
至高技术
创造至高价值

Supreme technology create supreme value

- ◆ **提高产量 40% 以上：**
40% Production Capacity Improved :
畜禽饲料粉碎、水产饲料粉碎、狐貉饲料粉碎、淀粉粉碎、酒精原料粉碎、柠檬酸粉碎、玉米粉碎、玉米茬粉碎、花生粕蛋白细粉碎、苍糠粉碎、稻草粉碎、木丝粉碎、木片粉碎等。
Stock feed grinding, aqua feed grinding, fox & raccoon feed grinding, starch grinding, raw alcohol grinding, citrate grinding, corn grinding, comcob grinding, peanut protein grinding, chaff grinding etc.
- ◆ **提高颗粒均匀度：**
More uniform particle size achieved :
高档畜禽饲料粉碎、鸡精调味品粉碎、雪茄烟杆粉碎、保水剂粉碎、酚醛模塑料粉碎、低温活性浓缩饲料等。
Premium quality stock feed grinding, seasoning grinding, cigar bar grinding, water retention grinding, phenolic molding compound grinding, low activity concentrated feed grinding etc.
- ◆ **超细粉碎：**
Super fine grinding upto 100 mesh :
60 目发酵豆粕粉碎、80-100 目虾、甲鱼、蟹饲料粉碎、100 目以上花生粕蛋白粉碎、100 目以上膨化玉米粉碎、60-80 目苍糠粉碎、60 目辣椒粉碎、50 目纸粉碎、60-100 目木屑粉碎、80-100 目大米粉碎等。
60 mesh fermented soybean meal grinding, 80-100 mesh shrimp, soft-shell turtle, crab feed grinding, 100 mesh peanut protein grinding, 100 mesh puffed corn grinding, 60-80 mesh chaff grinding, 60 mesh chili grinding, 50 mesh paper waste grinding, 60-100 mesh wood chip grinding, 80-100 mesh rice grinding etc.
- ◆ **低噪音粉碎：**
Low noise grinding condition:
在保持产能和细度的同时采用变频技术，75Kw-2 极电机粉碎机现场工作噪音低至 85 分贝（声压级），电耗明显降低。
With similar capacity and fineness using inverter technology, grinding condition noise for 75Kw-2pole motor hammermill is lower to 85 dB. Power consumption is obviously lower.

个性化定制
Customization 05

- ◆ 设备功率范围最小22 Kw至最大250 Kw, 满足不同需求。
Wide range of power selection, start from 22 Kw upto 250 Kw to meet performance requirement.
- ◆ 多种刀片、筛网组合方式适应不同原料粉碎的需要。
Various combination of blade & screen meet different application requirement.



- ◆ 智能喂料控制系统
Smart feeding control system
- ◆ 振动报警装置
Vibration Alarm
- ◆ 温度报警装置
Temperature Alarm
- ◆ 自动进料导向控制
Auto feeding direction Control

- ◆ 提供原料预处理、粉尘处理、成品输送、电气设备控制等全套粉碎机辅助设备。
We provide a wide range of assist equipments such as material pre-processing, dust collecting, conveying, control system to build the whole grinding system.

- ◆ 除了春谷厂标设备颜色, 还能够根据客户要求定制设备颜色。
Color can be customize besides Spring Valley's standard.
- ◆ 根据应用需求的不同选择碳钢 SUS304 不锈钢制作粉碎机。
Hammermill can be made by carbon steel or SUS304 stainless steel for different application.

采用设备模块化设计以及技术存档管理模式, 为客户提供广泛的个性化定制设备服务。

Benefited from modular design and technology management modes, Spring Valley is able to provide customer with extensive customization services.

06

辅助设备及其它产品
Assist equipments & etc



※ 刮板型
Scraper discharge

◆ 高压脉冲除尘器
High Pressure Pulse Filter

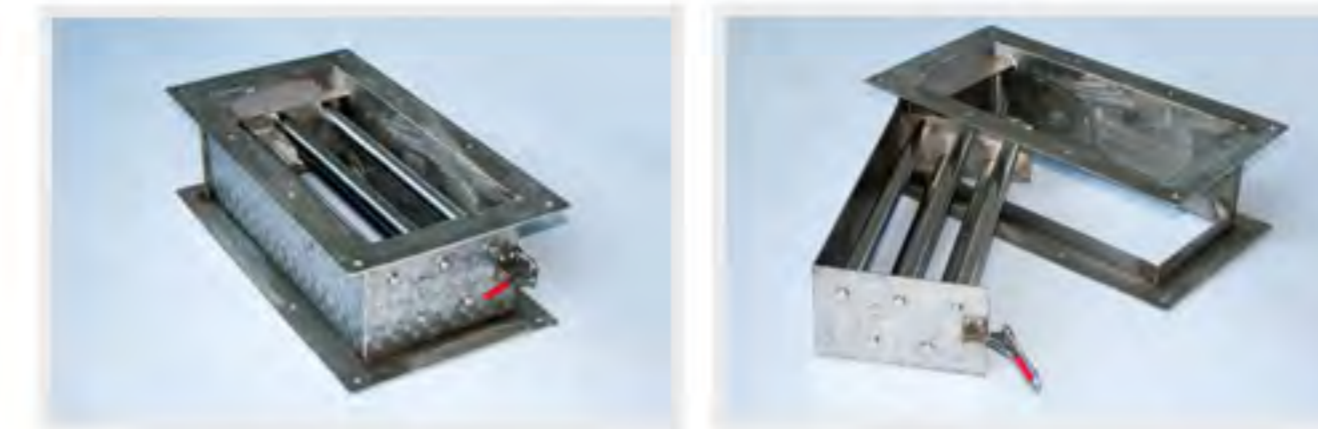
分离气流和细粉料，用于细粉料的收集。多种布袋材质供选择适应不同粉料收集，卸料方式可选择锥斗式与刮板式，进出口方向可根据客户要求定制。

Separation of airflow and powder material for product collection. Providing customer variety of bag material to adapt to different application, Discharge modular optional cone or scraper, inlet and outlet direction can be customized to.



※ 锥斗型
Cone discharge

除尘设备
Dust Collect Equipments



◆ 磁选器 (除铁器)

Magnet Clean Flow

通常安装于粉碎机进料口及其他需要的场合、用于除去颗粒、粉状原料中金属杂质，防止铁块落入粉碎机等设备中。

Usually installed on the inlet of hammermill to separate metal impurity existing in the material. Also to prevent large metal pieces accidentally fall into the operating hammermill.

◆ 48x60型锤片式破碎机

48x60 Hammer Crusher

可用于各类块状、饼状、颗粒状物料的破碎。亦可运用于物料的初步粉碎。

48x60 hammer crusher can crush block, pies, pieces particle shape material. Also crusher can be used as pre-fine grinder.



原料预处理及投料设备
Pre-processing & feeding equipments



◆ 关风机

Rotary Valve

在气力输送以及通风除尘系统中对物料进行输送或卸料。

Discharge material in penumatic system.



◆ 高压离心风机

High pressure blower

适用于高压强制通风以及粮食、饲料、塑料等加工行业的物料输送。

Can be use for high pressure ventilation and penumatic conveying in many industries.

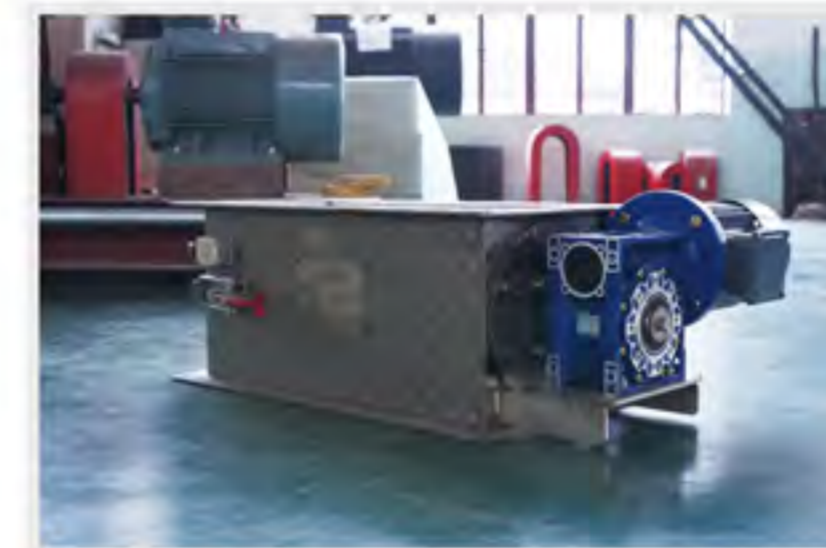


◆ 旋风分离器

Cyclone

分离气流中的物料及粉尘。

Seperation of airflow and powder material for product collection.



◆ 旋转磁选器

Rotary Magnet Clean Flow

可用于比重较轻，流动性差的片状，块状物料的除铁。

Can separate metal impurity existing in the pieces & particle material with low density or poor fluidity.

◆ 叶轮喂料器

Rotary Feeder

可用于各类块状、颗粒状物料的喂料。均匀的喂料能够使粉碎机负载波动小，达到粉碎机最佳工作状态。

Can feed pieces & particle material into the hammermill, uniform feeding can reduce hammermill load fluctuation and achieve maximum capacity.





◆ 皮带输送机

Belt Conveyor

可用于块状、片状碎散的原料输送。

Belt conveyor can conveying lump, piece of material.

◆ 沉降蛟龙输送机

Screw Conveyor with silo bin

适合流动性较好，产量较大的物料输送。通常应用于辅助吸风的粉碎工艺生产线。专为粉碎机配套设计。

Suitable for good flowable and high capacity product conveying. General application can be collecting product for "air assist grinding line". Designed for hammermill.



◆ 轴长至6米无悬挂免维护设计。

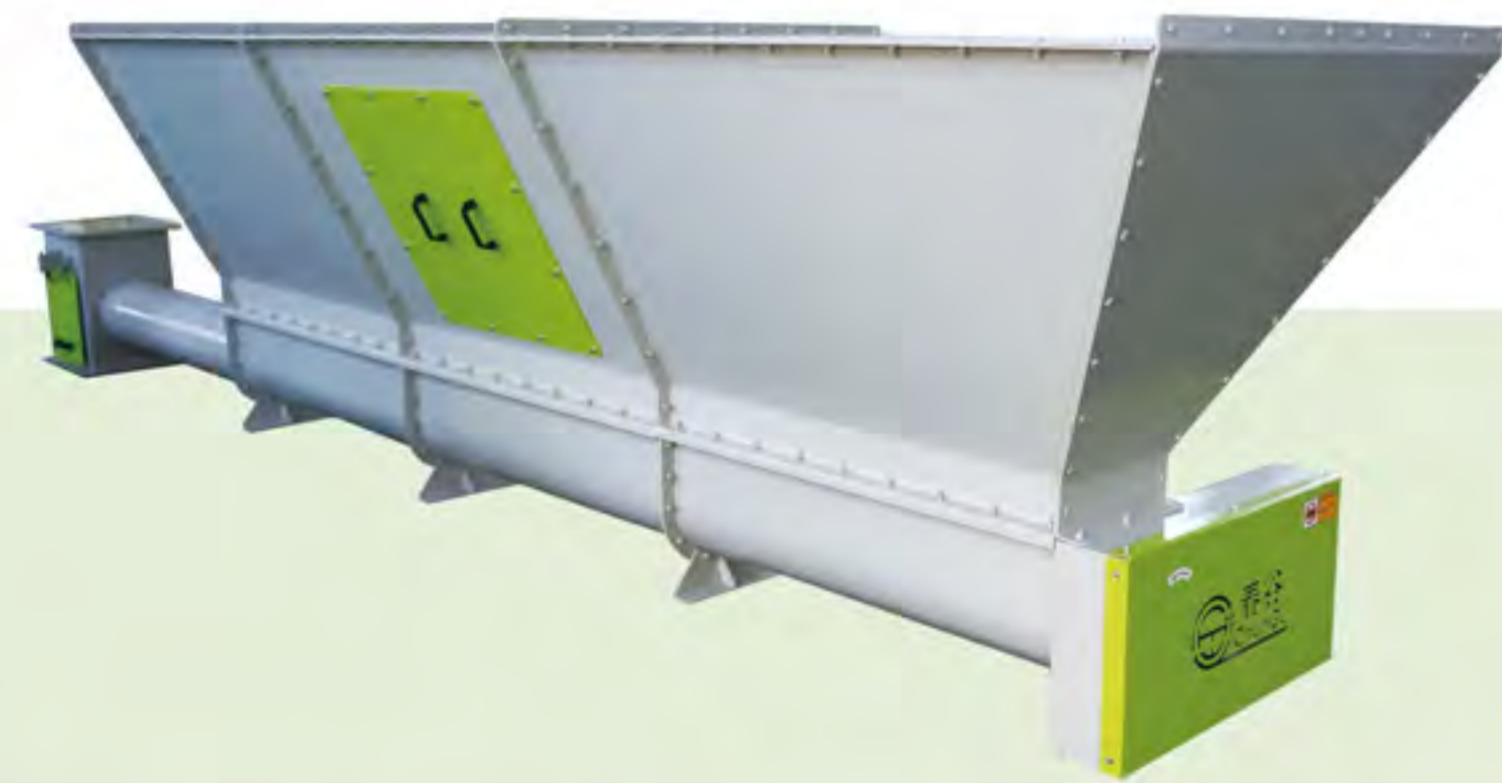
Featuring maintenance free design without hanging joint.



◆ 特制闭风防堵模块

具有阻风卸料、堵料排除、堵料报警功能。

Featuring Air-Block & Anti blocking discharge module



输送设备
Conveyor



◆ 斗式提升机

Bucket Elevator

适用于颗粒及粉料的垂直输送。多种输送速率选择。

Generally applied for particle and powder material vertically conveying

◆ 包括头、尾、中段多种模块化组件供选择

Various module parts can be selected and assembled

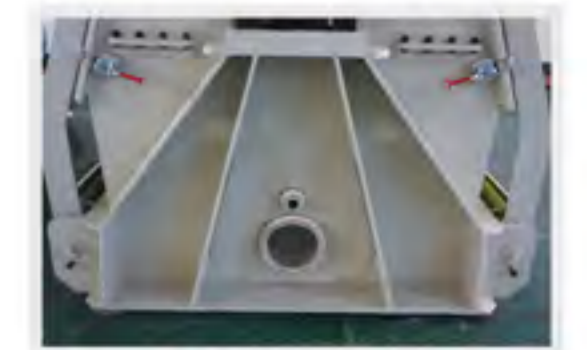


◆ 68系列剪式粉碎机与136系列振筛剪式粉碎机

68 series hammermill & 136 series hammermill

第三代粉碎机产品，技术成熟，现已具有极好的性价比。

3rd generation hammermill, mature technology, now offering excellent value.



◆ 振动电机隔离设计

Vibrating motor isolation



◆ 专利定锤结构技术

Patented "scissor cutting" technology

其它粉碎机型
Other grinders



◆ 成套设备电气控制控制柜

Grinding System Motor Control

包含电机运行、电机保护、大功率电机可选星三角启动、软启动、变频启动等多种启动方式。可按要求加装电耗记录、设备连锁、设备变频运行、设备故障报警等多种功能。可根据需求设计成单机控制、现场控制、总线集中控制等多种模式。

Including motor operating, motor protection. Large power motor can select different startor such as delta- star startor, soft-startor, inverter startor. Power consumption record, interlock, FQ operation, error alarm can be added into the system based on application.

◆ 自动化控制系统

Automatic Grinding Control System

基于PLC和人机界面技术半自动/全自动设备控制系统。可选择模拟屏、触控屏、上位机电脑控制等控制形式。

Semi-auto/auto control system based on PLC & User interface technology. Analog screen, touch screen, computer control can be selected.

电气控制
Control System



部分春谷工程项目实景集 PROJECTS

- ◆ 禽畜饲料粉碎线(澳大利亚)
Stock feed grinding line (Australia)
- ◆ 水产饲料粉碎线(澳大利亚)
Aqua feed grinding line (Australia)



◆ 有机肥料粉碎线(江苏)
Organic fertilizer grinding line (JiangSu)



◆ 茬糠粉碎线(甘肃)
Chaff grinding line (GanSu)

◆ 报纸粉碎线(辽宁)
Paper Waste grinding line (LiaoNing)



◆ 辣椒粉碎线(山东)
Chili grinding line (ShanDong)

◆ 红糖粉碎线(黑龙江)
Sugar grinding line (HeiLongJiang)

◆ 芝麻粉碎线(广西)
Sesame grinding line (GuangXi)

春谷公司为不同行业的客户提供
成熟可靠的工业粉碎应用解决方案

Spring Valley provide customers in different industries with mature and reliable solution for industrial grinding applications



◆ 树枝粉碎线(上海)
Branch grinding line (Shanghai)

◆ 酒精原料粉碎线(辽宁)
Alcohol grinding line (LiaoNing)

◆ 稻草粉碎线(江苏)
Straw grinding line (JiangSu)



售后服务与技术支持 SERVICE & TECH SUPPORT

技术支持 Technical Support

- ◆ 一天24小时的技术支持 确保设备系统正常运行。
24hr technical support ensure normal operation of equipments and system.



- ◆ 充分的售前咨询, 厂内的实验机组可为客户试料服务。
Sufficient pre-sales consulting, Spring Valley can provide experimental test service

- ◆ 提供客户详细的工艺流程图、设备布置图、电气图等技术资料。
Provide customer with detailed technical data such as process flow diagram, elevation diagram, electrical diagram etc.



质量保障 Quality Assurance

- ◆ 采用高精度激光切割、数控折弯等先进加工设备、确保设备制作质量。
Using high-precision laser cutting, CNC bending, and other advanced processing equipment to ensure production quality.



- ◆ 在设备出厂前需经过一系列质量检验标准测试、严格控制产品质量。
Before deliver to customers, every single product passed a series QC inspection for product quality control.

售后服务 Service

- ◆ 提供上门安装、调试、使用培训等一系列售后服务。
Providing on-site installation, comissioning, training etc. service.



- ◆ 主机终生保修和翻新业务, 长期提供所有销售机型的零配件及易损件。
Lifetime warranty on equipments, Spring Valley provide spare parts and consumables for all sales of product.

- ◆ 提供上门保养服务, 提供客户新产品资讯。
On-site maintenance service, provide customers with updated product information.



打破传统, 坚持革新, 创造至高技术

BREAK WITH TRADITION, INSIST ON INNOVATION, CREATING SUPREME TECHNOLOGY

春谷粉碎机发展历程 Milestone



1st Generation

1997 横宽型振动筛锤片粉碎机



2nd Generation

2009 剪式锤片粉碎机



3rd Generation

2011 振筛剪式锤片粉碎机



4th Generation

2014 至高锤片粉碎机